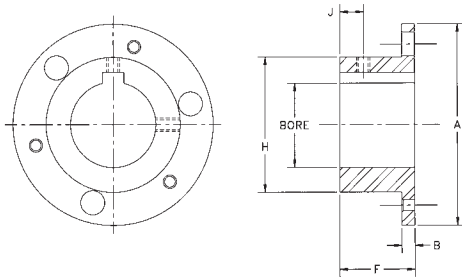


# COUPLING HUB OPTIONS



## 6 BOLT COUPLING HUBS

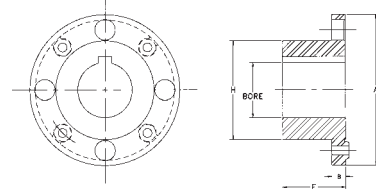
BH SERIES—USED ON BH, BP, B5, BY SERIES  
 PROVIDED WITH STRAIGHT BORE AND KEYWAY  
 INTERFERENCE FIT WITHOUT SETSCREWS IS RECOMMENDED



SIZE	MAX BORE	A	B	F	H	J	OPTIONAL SET SCREW SIZE
33	2.25	4.69	0.30	1.75	3.14	0.88	1/4-20 UNC
38	3.00	5.87	0.35	2.25	4.13	1.13	3/8-16 UNC
43	3.25	6.70	0.42	2.50	4.63	1.25	3/8-16 UNC
48	3.75	7.50	0.40	2.75	5.40	1.50	1/2-13 UNC
53	3.88	7.87	0.55	2.88	5.65	1.44	1/2-13 UNC
58	4.25	9.00	0.65	3.25	6.22	1.63	1/2-13 UNC
63	4.88	10.00	0.65	3.38	7.14	1.69	3/4-10 UNC
68	5.00	10.75	0.75	3.75	7.33	1.88	3/4-10 UNC
73	5.25	12.50	1.00	5.13	7.80	2.50	3/4-10 UNC
78	6.50	15.05	1.15	6.38	9.50	3.12	3/4-10 UNC

## 8 BOLT COUPLING HUBS

Dxx-3 CAST IRON MATERIAL, Dxx-3ST CAST STEEL MATERIAL  
 USED ON HH, HSH, FSH, HFTH SERIES  
 INTERFERENCE FIT WITHOUT SETSCREWS IS RECOMMENDED



SIZE	MAX BORE		A	B	F	H
	IRON	STEEL				
22	2.25	—	6.00	0.53	2.50	3.88
26	2.62	—	6.87	0.62	2.88	4.50
31	3.12	—	8.12	0.69	3.38	5.50
35	3.62	—	9.12	0.88	3.75	6.12
37	3.75	—	10.06	0.88	4.00	6.50
42	4.25	4.50	11.00	1.00	4.25	7.00
45	4.50	4.75	11.87	1.13	4.50	7.43
50	5.12	5.50	13.43	1.25	5.00	8.38
55	5.62	6.25	15.00	1.25	5.50	9.50
60	6.50	7.12	16.75	1.44	6.25	10.50
70	7.00	7.87	18.93	1.75	7.00	11.75
75	7.75	8.75	20.62	1.75	7.25	13.00
80	8.00	9.12	22.37	2.09	7.75	13.75
85	8.50	9.62	23.75	2.13	8.25	14.50
92	10.00	11.00	25.75	2.62	9.00	15.87

# FORM-FLEX DISC IDENTIFICATION CHART

ALL DIMENSIONS ARE ROUNDED TO THE NEAREST FRACTIONAL SIZE FOR IDENTIFICATION PURPOSES. NO TOLERANCES ARE SPECIFIED OR IMPLIED.  
 DISC SET THICKNESS VARIES FOR TYPE BA AND DA

4 BOLT DISCS		SIZE	WIDTH	I.D.	HOLE DIA	B.C. DIA	CHORD	DISC SET THICKNESS
	5	1-13/16	1	1/4	1-7/8	1-5/16	0.06	
	10	2-3/16	1-3/16	1/4	2-3/8	1-5/8	0.09	
	15	2-9/16	1-1/4	5/16	2-5/8	1-7/8	0.12	
	20	2-13/16	1-5/8	5/16	3-1/8	2-3/16	0.14	
	25	3-9/16	1-3/4	7/16	3-3/4	2-5/8	0.15	
	30	4	2-1/16	1/2	4-1/4	3	0.18	
	35	4-3/4	2-3/4	1/2	5-1/4	3-3/4	0.28	
	40	5-1/2	3	5/8	6	4-1/4	0.30	
	45	6-1/16	3-1/2	5/8	6-3/4	4-3/4	0.40	
	50	7	4	3/4	7-3/4	5-1/2	0.43	
55	7-3/4	4-1/4	1	8-1/2	6	0.51		
6 BOLT DISCS		SIZE	WIDTH	I.D.	HOLE DIA	B.C. DIA	CHORD	DISC SET THICKNESS
	33	3-3/4	2-3/4	1/4	3-3/4	1-7/8	0.10	
	38	4-13/16	3-9/16	5/16	4-7/8	2-7/16	0.13	
	43	5-11/16	3-15/16	7/16	5-9/16	2-7/8	0.16	
	48	6-3/8	4-5/8	7/16	6-3/8	3-3/16	0.19	
	53	6-3/4	4-3/4	1/2	6-5/8	3-5/16	0.24	
	58	7-3/4	5-1/4	5/8	7-7/16	3-3/4	0.25	
	63	8-1/2	6	5/8	8-3/8	4-3/16	0.30	
	68	9-1/4	6-1/4	3/4	9-15/16	5	0.34	
8 BOLT DISCS		SIZE	WIDTH	I.D.	HOLE DIA	B.C. DIA	CHORD	DISC SET THICKNESS
	22	5-5/8	3-7/8	5/16	4-3/4	1-13/16	0.17	
	26	6-9/16	4-7/16	13/32	5-1/2	2-1/8	0.23	
	31	7-3/4	5-1/4	15/32	6-1/2	2-1/2	0.25	
	35	8-5/8	5-3/4	17/32	7-1/4	2-3/4	0.29	
	37	9-5/8	6-5/16	5/8	8	3-1/16	0.31	
	42	10-1/2	6-3/4	11/16	8-5/8	3-5/16	0.31	
	45	11-1/4	7-1/4	3/4	9-1/4	3-1/2	0.37	
	50	12-13/16	8-1/2	7/8	10-1/2	4	0.46	
	55	14-3/8	9	1	11-3/4	4-1/2	0.54	
	60	15-15/16	9-15/16	1-1/8	13	5	0.59	
	70	18-8	11-1/8	1-5/16	14-3/4	5-5/8	0.78	
	75	19-3/4	12	1-7/16	16	6-1/8	0.80	
	80	21-7/16	13-1/8	1-9/16	17-3/8	6-5/8	0.81	
	85	22-7/8	14	1-3/4	18-1/2	7-1/8	0.87	
	92	24-7/8	15	1-7/8	20	7-5/8	1.00	